

**BALDOR® • RELIANCE** 

**Product Information Packet**

**VHM2535T**

**30HP, 1775RPM, 3PH, 60HZ, 286HP, 1046M, OPEN**

Part Detail							
Revision:	R	Status:	INA/A	Change #:		Proprietary:	No
Type:	AC	Elec. Spec:	10WGX411	CD Diagram:	CD0180	Mfg Plant:	
Mech. Spec:	10F886	Layout:	10LYF886	Poles:	04	Created Date:	
Base:	N	Eff. Date:	03-08-2016	Leads:	9#10		

Specs			
Catalog Number:	VHM2535T	Insulation Class:	F
Enclosure:	OPEN	Inverter Code:	Not Inverter
Frame:	286HP	KVA Code:	H
Frame Material:	Iron	Lifting Lugs:	Standard Lifting Lugs
Output @ Frequency:	30.000 HP @ 60 HZ	Locked Bearing Indicator:	Locked Bearing
Synchronous Speed @ Frequency:	1800 RPM @ 60 HZ	Motor Lead Quantity/Wire Size:	9 @ 10 AWG
Voltage @ Frequency:	230.0 V @ 60 HZ	Motor Lead Exit:	Ko Box
	460.0 V @ 60 HZ	Motor Lead Termination:	Flying Leads
XP Class and Group:	None	Motor Type:	1046M
XP Division:	Not Applicable	Mounting Arrangement:	F1
Agency Approvals:	UR	Power Factor:	80
	CSA	Product Family:	General Purpose
Auxillary Box:	No Auxillary Box	Pulley End Bearing Type:	Ball
Auxillary Box Lead Termination:	None	Pulley Face Code:	P-Base
Base Indicator:	No Mounting	Pulley Shaft Indicator:	P-Base Groove & Key
Bearing Grease Type:	Polyrex EM (-20F +300F)	Rodent Screen:	None
Current @ Voltage:	38.200 A @ 460.0 V	Shaft Extension Location:	Pulley End
	76.400 A @ 230.0 V	Shaft Ground Indicator:	No Shaft Grounding

	92.000 A @ 208.0 V	<b>Shaft Rotation:</b>	Reversible
<b>Design Code:</b>	B	<b>Shaft Slinger Indicator:</b>	Shaft Slinger
<b>Drip Cover:</b>	Drip Cover	<b>Speed Code:</b>	Single Speed
<b>Duty Rating:</b>	CONT	<b>Motor Standards:</b>	NEMA
<b>Front Face Code:</b>	Drip Cover Mounting	<b>Starting Method:</b>	Direct on line
<b>Front Shaft Indicator:</b>	None	<b>Thermal Device - Bearing:</b>	None
		<b>Vibration Sensor Indicator:</b>	No Vibration Sensor

Nameplate NP1256L										
CAT.NO.	VHM2535T									
SPEC.	10F886X411G1									
HP	30									
VOLTS	230/460									
AMP	76.4/38.2									
RPM	1775									
FRAME	286HP				HZ	60			PH	3
SER.F.	1.15		CODE	H	DES	B		CLASS	F	
NEMA-NOM-EFF	92.4		PF	80						
RATING	40C AMB-CONT									
CC	010A				USABLE AT 208V			92		
DE	6312				ODE	6309				
ENCL	OPEN		SN							

Parts List		
Part Number	Description	Quantity
SA124441	SA 10F886X411G1	1.000 EA
RA114862	RA 10F886X411G1	1.000 EA
10CB3003A04	KO BOX, MACH W/2.00 NPT LD HL & #26 DRAI	1.000 EA
10XN3118K16	5/16-18 X 1' GRADE #5, STL, ZINC PLATE	4.000 EA
HW1001A31	LOCKWASHER 5/16, ZINC PLT.591 OD, .319 I	4.000 EA
WD1000B16	T&B CX70TN OR L70P TERMINAL LUG	1.000 EA
51XF2520A08	SCREW, HEX SER SLT HD, ZN 1/4-20 X .50 L	1.000 EA
10EP1201A01	FREP, MACH W/309 BRG	1.000 EA
10AD2002	AIR DEFLECTOR, 310 OPEN P-BASE	1.000 EA
12XN1032A08	10-32X1/2 HEX HD SLTD	3.000 EA
HW1001A10	WASHER, #10 SPLT LK, ZN X	3.000 EA
HA4051A00	PLASTIC CAP FOR GREASE FITTING	1.000 EA
10XN3816K52	3/8-16 X 3-1/4 HEX HEAD CAP SCREW GRD 5	4.000 EA
HW1001A38	LOCKWASHER 3/8, ZINC PLT .688 OD, .382 I	4.000 EA
HW4600B41	V-RING SLINGER 2.125 X 2.880 X 0.280	1.000 EA
HW5100A11	W3917-042 WVY WSHR (WB)	1.000 EA
10XN3118K80	.31-18 X 5.0 HEX HD CAP SCREW, GRADE 5	4.000 EA
HW1001A31	LOCKWASHER 5/16, ZINC PLT.591 OD, .319 I	4.000 EA
10EP1507A02	ENDPLATE, MACH W/312 BRG W/SLINGER RECES	1.000 EA
HA4051A00	PLASTIC CAP FOR GREASE FITTING	1.000 EA
10XN3816K44	3/8-16 X 2.75 HEX HD CAP SCREW, GRADE 5	4.000 EA
HW1001A38	LOCKWASHER 3/8, ZINC PLT .688 OD, .382 I	4.000 EA
10FH1500A01	DRIP COVER, MACH	1.000 EA
HW3201A12	.50-13 EYEBOLT W/2.25 SHANK	2.000 EA

Parts List (continued)		
Part Number	Description	Quantity
HW1001A50	LOCKWASHER 1/2, ZINC PLT.,.879 OD, .509 I	2.000 EA
HW1000A50	1/2 SAE FLAT WASHERS	2.000 EA
10CB3501	CONDUIT BOX LID FOR 10CB3003, 10CB3004 &	1.000 EA
14GS1001	GASKET, CONDUIT BOX LID 314 FRAME	1.000 EA
10XN2520K16	1/4-20 X 1" HX HD SCRW GRADE 5, ZINC P	4.000 EA
HW1001A25	LOCKWASHER 1/4, ZINC PLT .493 OD, .255 I	4.000 EA
HW2501E11	KEY, 1/4 SQ X 1.125	1.000 EA
12GS1000	GASKET	1.000 EA
HW4500A03	GREASE FITTING, .125 NPT 1610(ALEMITE) 8	1.000 EA
HW4500A17	317400 ALEMITE GREASE RELIEF	1.000 EA
MJ1000A02	GREASE, MOBIL POLYREX EM - 124047	0.130 LB
HW4500A03	GREASE FITTING, .125 NPT 1610(ALEMITE) 8	1.000 EA
HW4500A17	317400 ALEMITE GREASE RELIEF	1.000 EA
MG1000G27	MED CHARCOAL METALLIC GREY 400-0096	0.200 GA
85XU0407S04	4X1/4 U DRIVE PIN STAINLESS	2.000 EA
LB1182	WARNING LABEL FOR MOTORS WITH EYENUTS	2.000 EA
MN416A01	TAG-INSTAL-MAINT no wire (1200/bx) 3/19	1.000 EA
LB1119N	WARNING LABEL	1.000 EA
LC0181	CONNECTION LABEL	1.000 EA
NP1256L	ALUM UL CSA CC INDUSTRIAL MOTOR A60	1.000 EA
12PA1030	PACKAGING GROUP PRINT PK1024A06	1.000 EA
PK6538	2X4 X 11 SPACER	2.000 EA

**AC Induction Motor Performance Data**

Record # 20737 - Typical performance - not guaranteed values

<b>Winding:</b> 10WGX411-R003	<b>Type:</b> 1046M	<b>Enclosure:</b> OPEN
-------------------------------	--------------------	------------------------

Nameplate Data				460 V, 60 Hz: High Voltage Connection	
Rated Output (HP)	30			Full Load Torque	89 LB-FT
Volts	230/460			Start Configuration	direct on line
Full Load Amps	76.4/38.2			Breakdown Torque	323 LB-FT
R.P.M.	1775			Pull-up Torque	130 LB-FT
Hz	60	Phase	3	Locked-rotor Torque	193 LB-FT
NEMA Design Code	B	KVA Code	H	Starting Current	260 A
Service Factor (S.F.)	1.15			No-load Current	17.4 A
NEMA Nom. Eff.	92.4	Power Factor	80	Line-line Res. @ 25°C	0.226 Ω
Rating - Duty	40C AMB-CONT			Temp. Rise @ Rated Load	29°C
S.F. Amps				Temp. Rise @ S.F. Load	35°C
				Locked-rotor Power Factor	32
				Rotor inertia	3.66 LB-FT <sup>2</sup>

Load Characteristics 460 V, 60 Hz, 30 HP

% of Rated Load	25	50	75	100	125	150	S.F.
Power Factor	42	63	74	79	82	82	81
Efficiency	86.6	91.6	92.8	92.9	92.7	92.2	92.8
Speed	1790	1785	1778	1772	1765	1758	1768
Line amperes	19.6	24.5	30.8	38.2	46.3	55.12	43.02

Performance Graph at 460V, 60Hz, 30.0HP Typical performance - Not guaranteed values

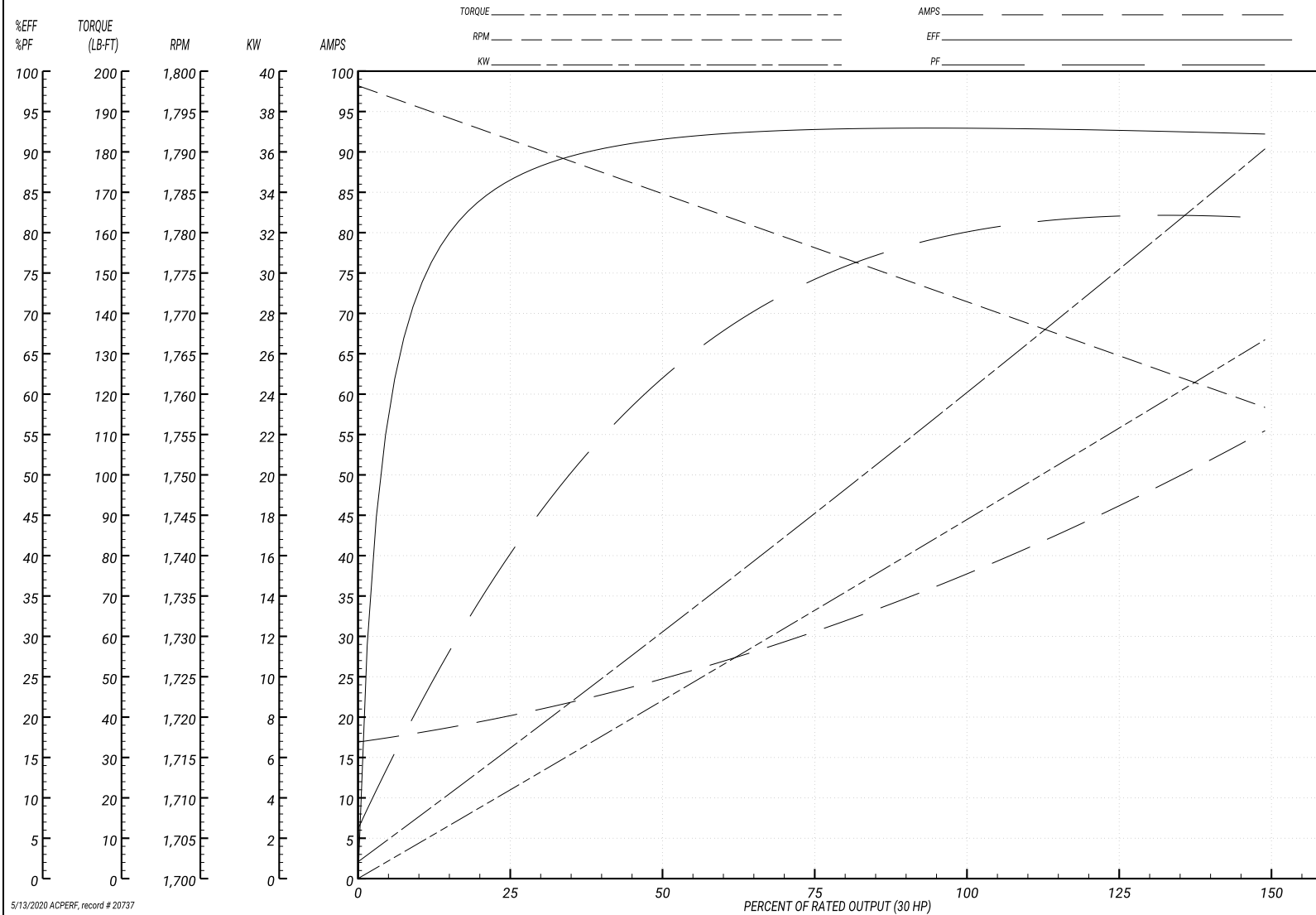
ABB Motors and Mechanical Inc.

WINDING # 10WGX411

Typical performance - not guaranteed values.

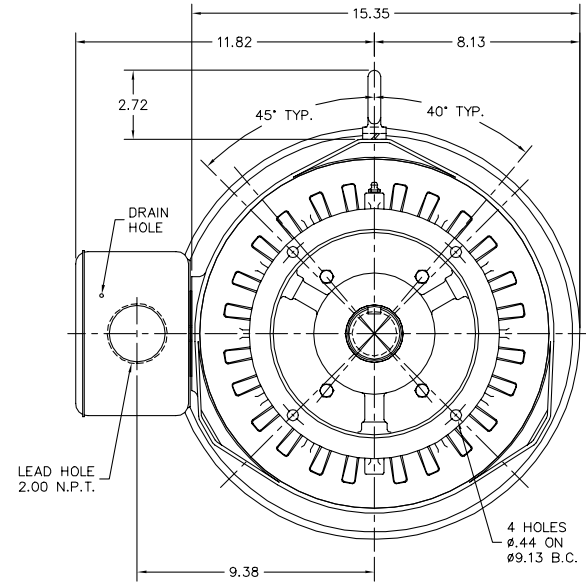
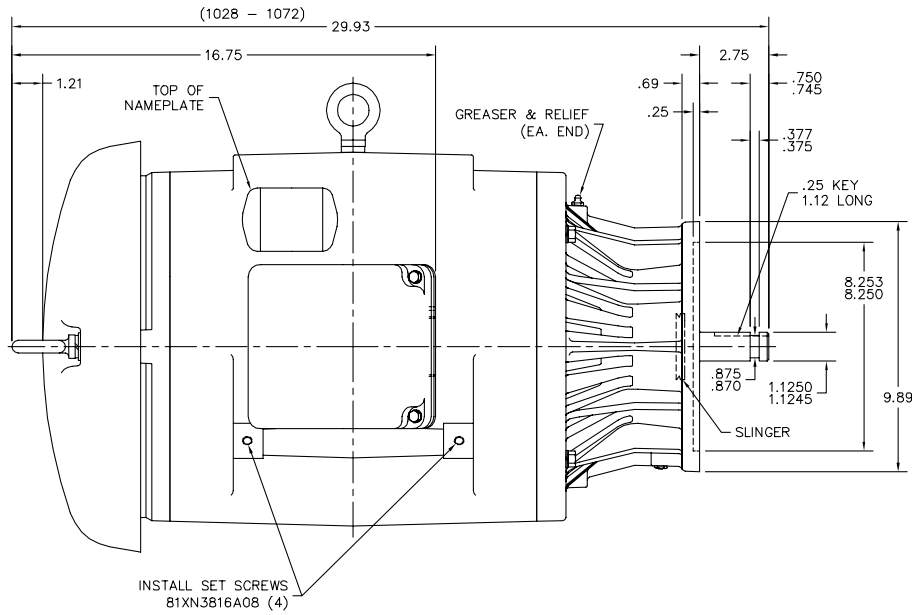
30 HP 3 PH 60 HZ 1775 RPM 460 V 1046M

TORQUES(LB-FT): PO=323 PU=130 LR=193 LRA=260



5/13/2020 ACPERF, record # 20737

10LYF886



CUSTOMER IS RESPONSIBLE FOR DETERMINING THAT BALDOR'S PRODUCT WILL PERFORM SUITABLY IN THE INTENDED APPLICATION.

REV. DESC: UPDATED DESCRIPTION		
REV. LTR: C	VERSION: 03	TDR: 000000855727
FILE: \AAA\00123\482	REVISED: 12:37:21 05/29/2014	BY: ENNINDO
MTL: -		

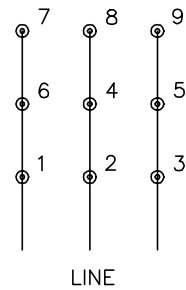
**BALDOR**  
VERT OPEN 284-6HP W/312 BRG  
SH 1 of 1

10LYF886

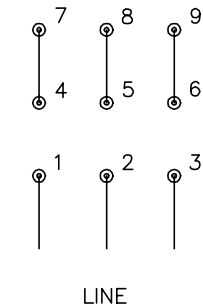
CD0180



LOW VOLTAGE  
(2D)



HIGH VOLTAGE  
(1D)



NOTES:

1. INTERCHANGE ANY TWO LINE LEADS TO REVERSE ROTATION.
2. OPTIONAL THERMOSTATS ARE PROVIDED WHEN SPECIFIED.
3. ACTUAL NUMBER OF INTERNAL PARALLEL CIRCUITS MAY BE A MULTIPLE OF THOSE SHOWN ABOVE.
4. LEAD COLORS ARE OPTIONAL. LEADS MUST ALWAYS BE NUMBERED AS SHOWN.

CD0180

REV. DESC: ADD CLASS CONN00000007		
REV. LTR: D	VERSION: 01	TDR: 000001099922
FILE: \AAA\00005\148	REVISED: 10:25:29 02/19/2019	BY: ENBRIRO
MTL: -	© □	

**BALDOR - RELIANCE®**

3PH, DV, 9 LEADS, DELTA CONNECTION

SH 1 of 1